



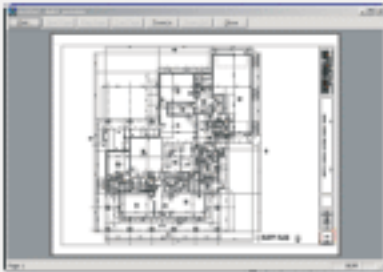
New Release!

We are proud to announce the release of BuildersCAD 8.3. The powerful new upgrade has many exciting features listed below and even more features in the works. Don't miss out on the exciting things to come. **Renew/Upgrade now!**

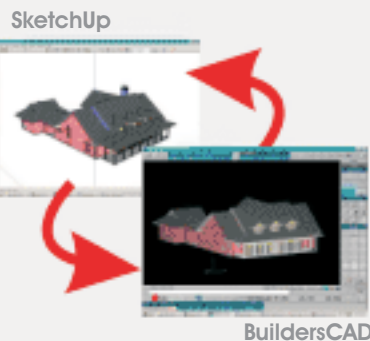
PDF MENU



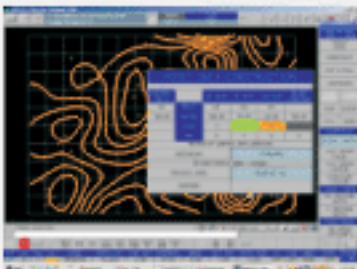
PLOT PREVIEW



BuildersCAD & SKETCHUP



TOPOGRAPHER



BuildersCAD 8.3:

▶ NEW PDF MENU

BuildersCAD customers can now create PDFs faster and easier than ever before with the new BuildersCAD PDF menu.

▶ LAYERS IN PDF OUTPUT

Layers are included in your PDF files made from BuildersCAD drawings. This feature requires Adobe Reader 6.0 or above.

▶ PLOT PREVIEW

Take the guesswork out of printing and plotting, see exactly how your documents will look when they are printed with BuildersCAD's new print preview.

▶ "MAP BY SCREEN COLORS" PENMAP MODE

In BuildersCAD 8.3 a new pen mapping mode (Map by Screen Colors) has been added.

▶ BuildersCAD/SKETCHUP — INTEGRATION ENHANCEMENTS

BuildersCAD and SketchUp have a closer relationship than ever, making BuildersCAD the best 3D/2D CAD application for SketchUp designs.

▶ IMPORT FROM SKETCHUP

BuildersCAD now imports a SketchUp .skp file directly into the current database.

▶ EXPORT FROM SKETCHUP

BuildersCAD now exports the current model directly to a SketchUp .skp file. As the file is exported, SketchUp textures may be assigned to surfaces by BuildersCAD color.

▶ IMPROVED INTERFACE TO eZ

In BuildersCAD 8.3 files can be loaded into eZ with layers

ARICAD TOPOGRAPHER - 3D SITE

▶ BuildersCAD 8.3 introduces new tools for laying out and creating both 2D and 3D Site drawings and models.

COMMAND ALIASES

▶ BuildersCAD 8.3 adds a powerful new feature to allow you to create one or two letter aliases for common commands.

SOURCE CODE UPDATE

▶ The BuildersCAD source code has been updated and modernized making it easier to maintain and add more modern features.

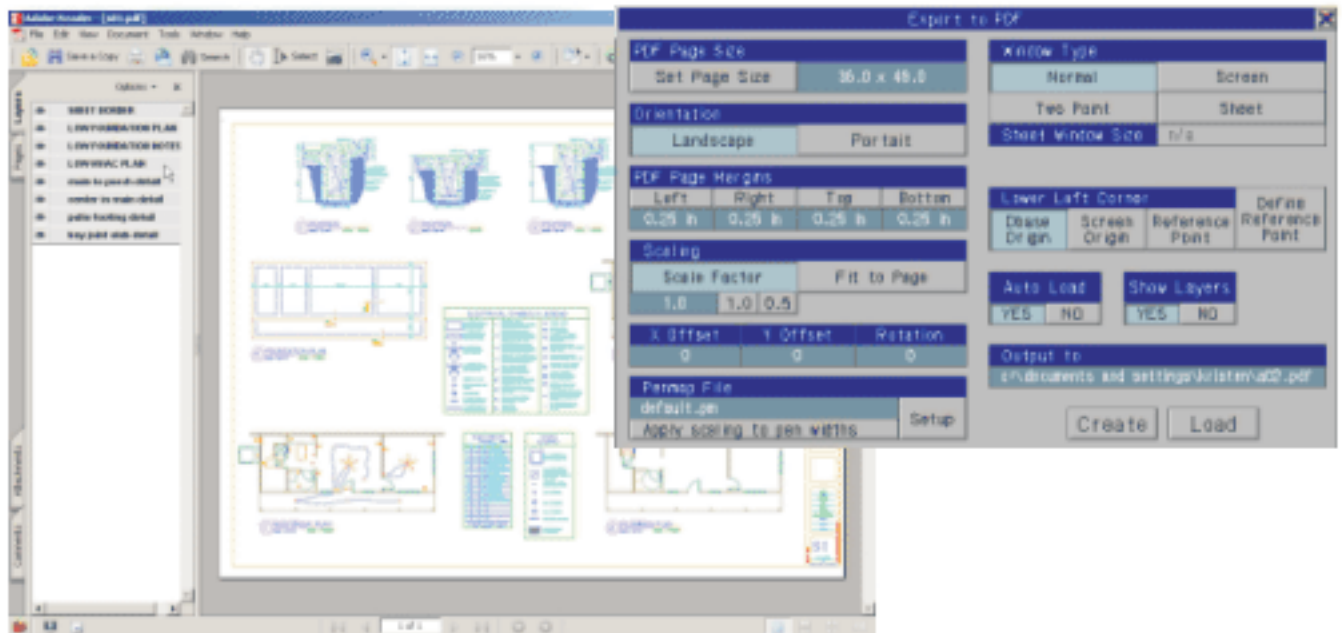
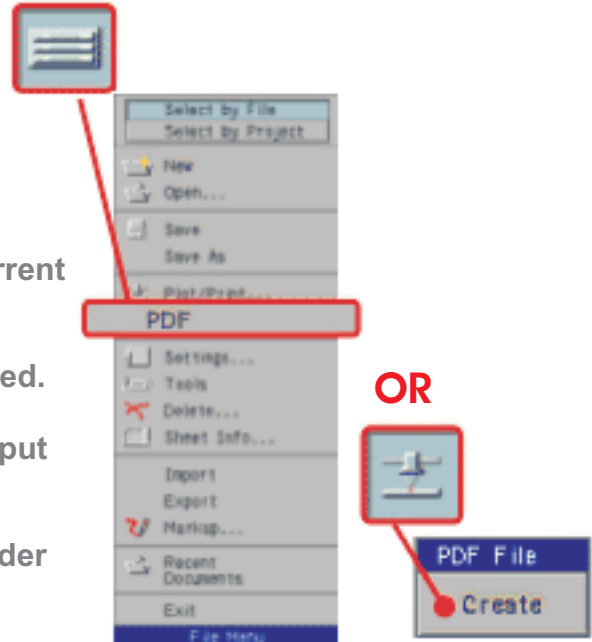
The New BuildersCAD PDF Menu

BuildersCAD customers can now create PDFs faster and easier than ever before with the new BuildersCAD PDF menu. These PDFs are great for distributing finished sheets to easily communicate and collaborate with other members of the project team.

BuildersCAD TO PDF

The new BuildersCAD PDF Menu can be opened from the File Menu or on the Plot/Print Menu by selecting the PDF File Create button. Conveniently located, the new PDF menu makes it faster and easier than ever before to create a PDF.

- Simplifies the creation of PDF files of your current drawing
- No external PDF writer or print driver is required.
- Select the page size, orientation, penmap, output file and GO!
- Automatically loads your PDF into Adobe Reader to check your PDF file.
- Option to make layers on/off selectable within Adobe Reader (Requires Adobe Reader 6.0 and above.)



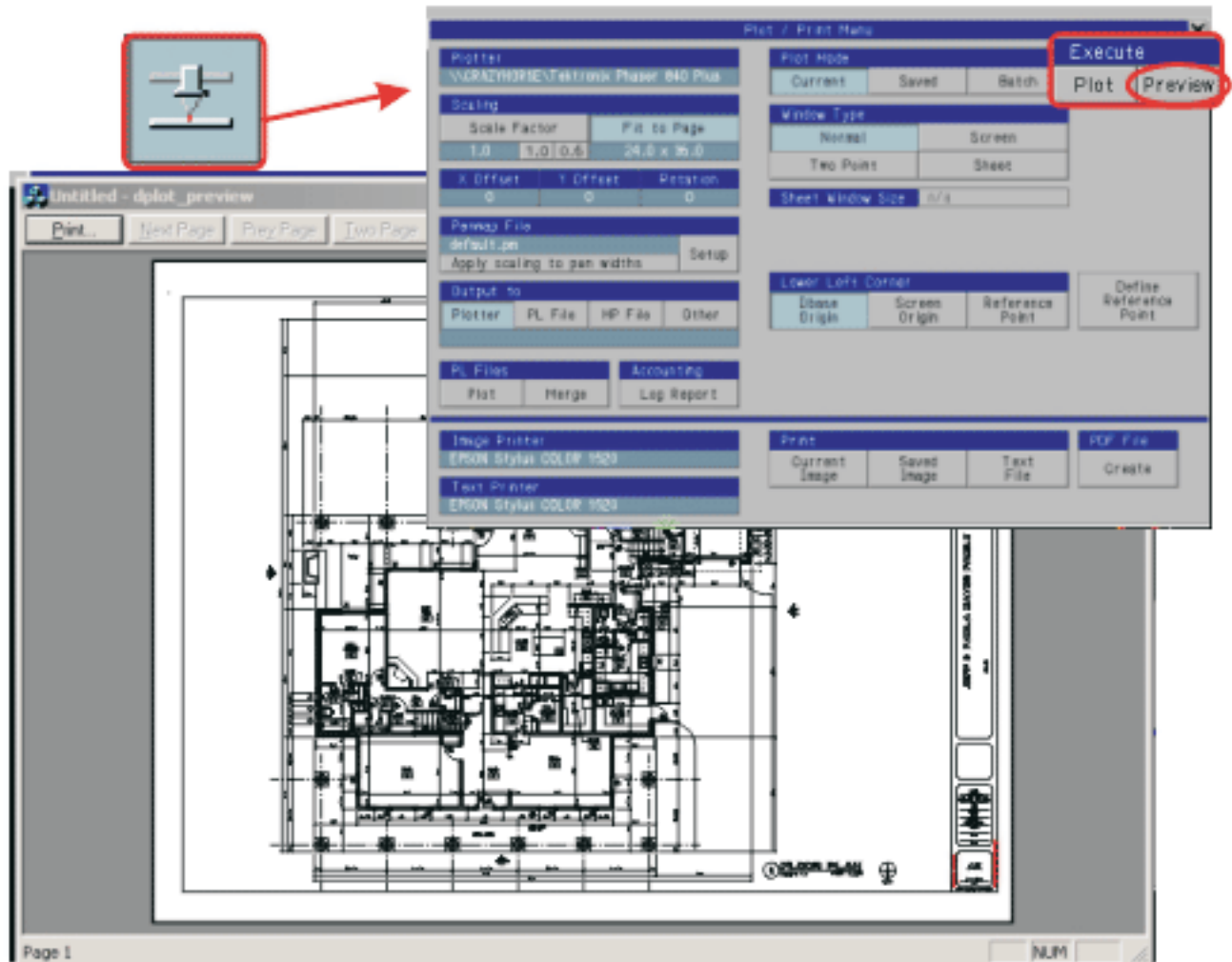
Plot Preview

BuildersCAD customers can take the guesswork out of plotting and printing with the new PlotPreview.

PLOT PREVIEW

The print preview allows you to preview your work to show how the position and print size of the print job will appear on paper.

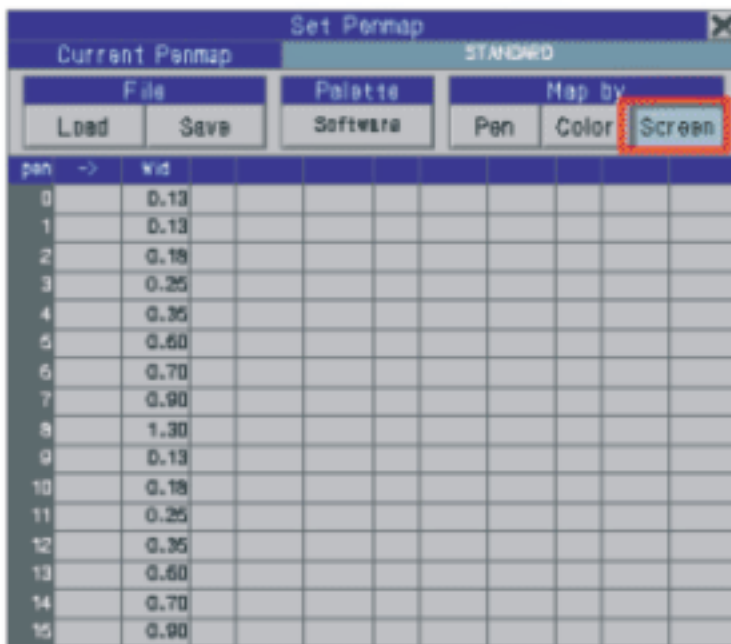
- Eliminate the trial and error guesswork of getting all of your plot settings correct.
- See the results of applying various penmaps before the sheet is plotted
- Zoom in and out on the preview to examine an area closer before sending it to print.



“Map by Screen Colors” Penmap Mode

BuildersCAD 8.3 allows you to create a penmap which uses the pen setting for line width and the screen color for the plot color.

MAP BY SCREEN COLORS



NOTE:

A colormap is not saved with a BuildersCAD drawing, so if you want to use background plot, or saved plot, you will need to save penmap / colormap combinations with the colormap desired.

Map by Screen Color mode uses the pen numbers of entities to determine pen widths, but uses the current color map to determine plotted colors.

Color 1 (white in the standard colormap) is always plotted as black. If color 1 is taken to AutoCAD or eZ (through DWG), then it is sent as AutoCAD’s “black/white” color.

In order to plot in screen color mode:

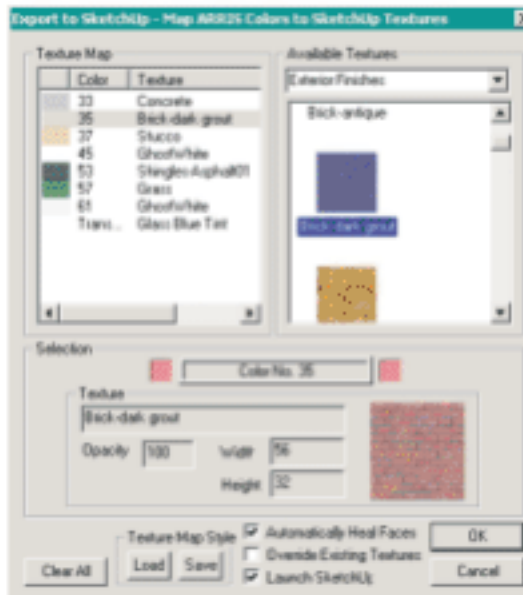
1. Open the plot menu, right click on pens on the toolbar, or right click on col on the toolbar to bring up the “Set Penmap” menu above.
2. Choose Screen (highlighted in red above) to set screen mode.
3. Click Save and enter a name save the pen map.

BuildersCAD & SketchUp Integration

BuildersCAD and SketchUp have a closer relationship than ever, making BuildersCAD the best CAD application for both SketchUp and BuildersCAD designs.

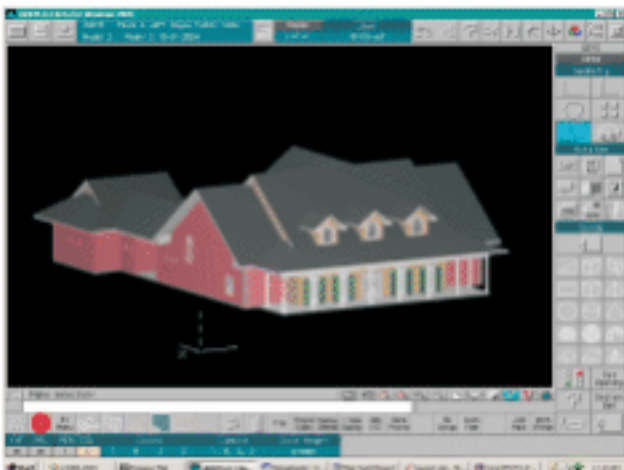
SKETCHUP TEXTURES ASSIGNED IN BuildersCAD

Assign materials to surfaces in BuildersCAD and view the results in SketchUp.



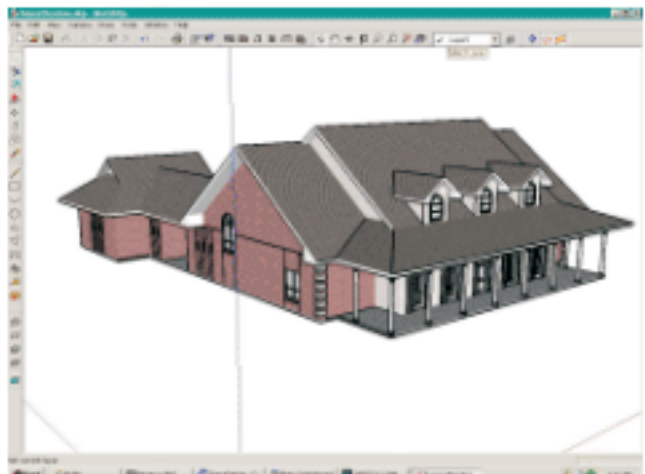
Map BuildersCAD Color Number to Corresponding SketchUp Texture

BuildersCAD Model



BuildersCAD Displays as Opaque Colors

SketchUp Model



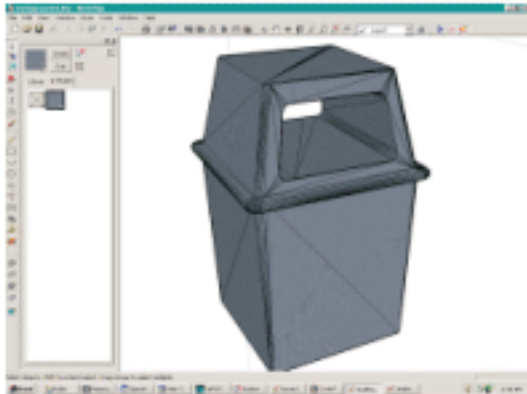
SketchUp Displays with Textures

SKETCHUP TEXTURES REMEMBERED IN BuildersCAD

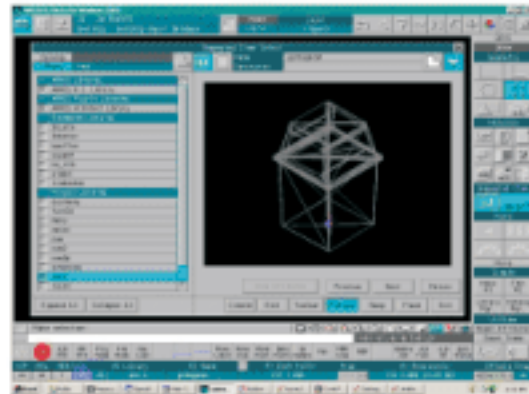
Materials assigned in SketchUp are retained in BuildersCAD and displayed when the model is sent back to SketchUp.

Example of Use of this New Feature

Step 1:
Create SketchUp Object with Textures



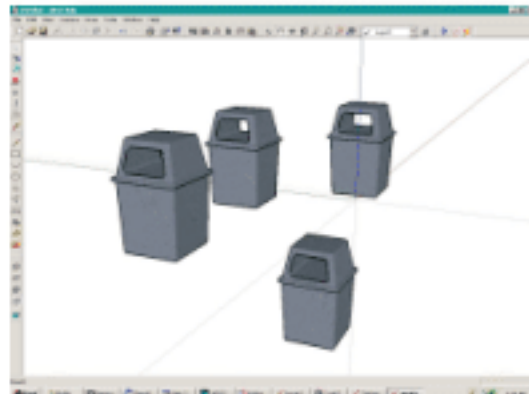
Step 2:
Import into BuildersCAD and Place in RI Catalog



Step 3:
Place New RI in BuildersCAD Database



Step 4:
Export to SketchUp, Texture Displays



Improved Interface to eZ

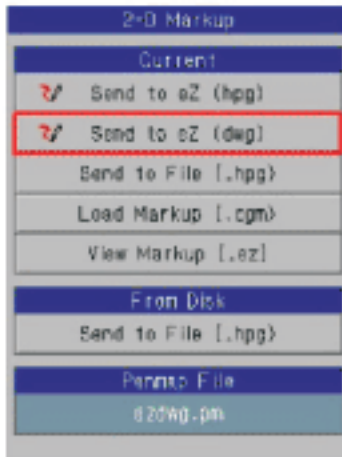
We have added layers to the BuildersCAD to eZ Interface, which will make it easier to highlight your eZ presentations.

Improved Interface to eZ

The BuildersCAD to eZ Interface is available in two places:

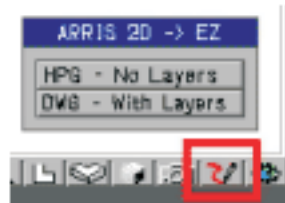
The Markup Menu

Export from the Send to eZ dwg button automatically creates a DWG file with layers and launches it into eZ.



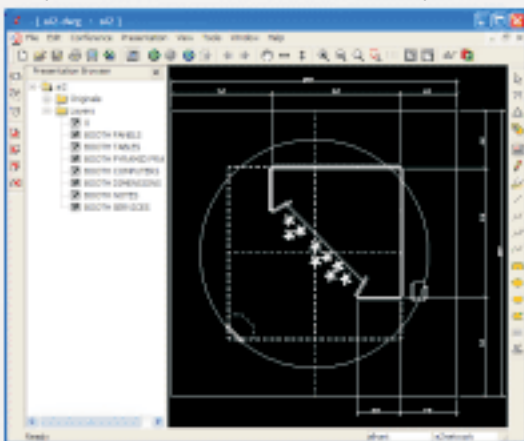
The View Control Bar

This brings up a pop-up asking you if you want to use the pre 8.2 method - load HPG with no layers, or the method using DWG to load with layers.



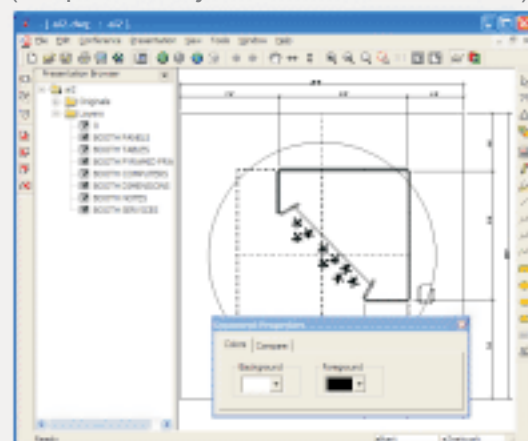
NOTE:
DWG has layers, but it handles background color, pens and colors differently. Also, the ARRIS ->eZ export using DWG as a file transfer mode only supports 8 colors.

BuildersCAD in eZ with Layers (White on black, will not print)



eZ import from DWG supports 8 colors, so BuildersCAD colors (as determined by the current penmap) will be converted to the closest of these 8 colors.

BuildersCAD in eZ with Layers (Properties adjusted for black on white)



You can use the property settings (eyeglasses icon) in eZ to set the background to white and the foreground to black. Now it will print properly, but no colors will be displayed.

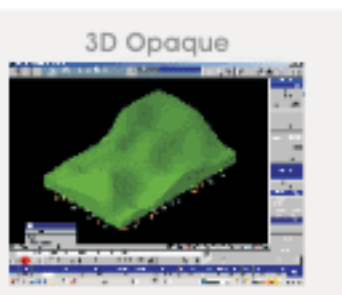
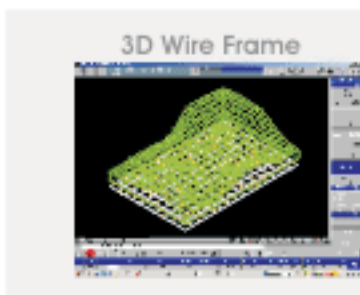
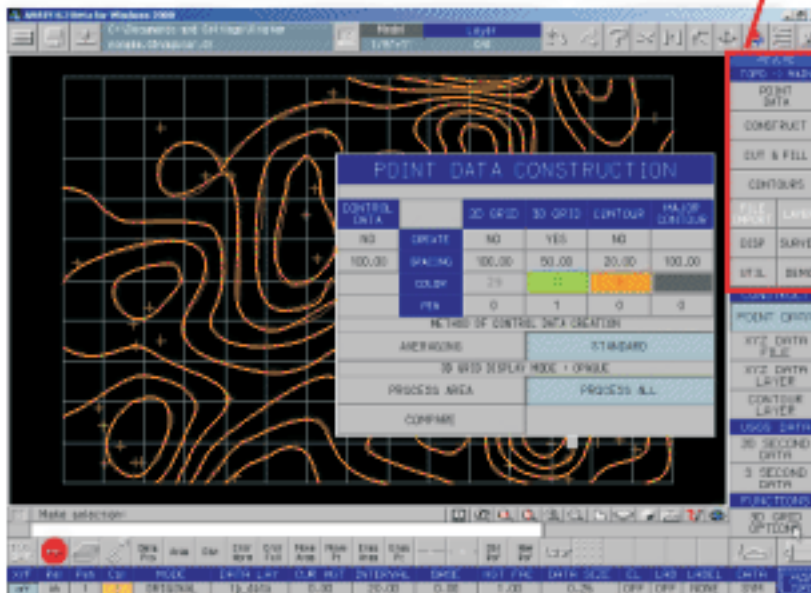
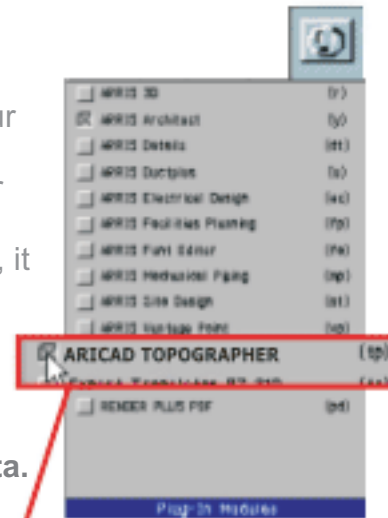
TOPOGRAPHER

BuildersCAD 8.3 integrates this powerful feature into its arsenal of tools. The Topographer is great for analyzing, designing or modifying terrain models to create accurate contour maps and to perform precise cut and fill calculations.

ARICAD Topographer Plug-in

The topographer system is designed to create contour maps and 3D surface models from raw X,Y, Z data. Data may originate as surveying data, USGS data, or be generated by the user. Also, once a existing and proposed model has been created of a particular site, it is possible to perform cut and fill calculations.

- Create quick, easy and accurate contour lines automatically
- Create 3D Terrain models from your contour data. Models may be either "mesh" or "cake" types.



Topographer includes a demonstration which does an excellent job of describing the typical sequence of events used to perform all calculations and operations available.

Command Aliases

Assign your favorite BuildersCAD commands to a user defined 1 or 2 keystroke command alias. This makes accessing your most used BuildersCAD commands even faster and easier.

Command Aliases

BuildersCAD 8.3 adds a powerful new feature to allow you to create one or two letter aliases for common commands. For example, you can type "i" to execute the single line command :mn_line.

Pressing the alias key(s) followed by either a space or the Enter key will execute an alias.

The following will all execute the single line command:

- I SPACE (or upper case L)
- :I ENTER (or upper case L)
- :I SPACE (or upper case L)
- :I ENTER (or upper case L)

The colon (:) versions will execute during point input (but not during text input)

See the section in the appendix-Command Alias Files for information on how to customize your aliases.



8.3 NEW FEATURES!

Pricing

UPGRADE TODAY!

Renew Subscription

(from version 8.1 only)

\$500

Upgrade to Subscription

(from version 8 or prior)

\$695

BUY A NEW SEAT!

BuildersCAD 8.3

\$995

BuildersCAD 8.3 + Intelli-Framer

\$2995

SketchUp[™] Bundles:

BuildersCAD 8.3 + SketchUp

\$1295

BuildersCAD 8.3 + Intelli-Framer + SketchUp

\$3295