

Authorizing BuildersCAD Using a Rainbow USB Superpro Key

The standard authorization process for **BuildersCAD** uses a Rainbow USB Superpro hardware key device. This key is supported on all Windows operating systems which support USB (Universal Serial Bus). Note that if your operating system is Windows NT, you *cannot* use a USB key as USB is not supported by Windows NT. If you are using BuildersCAD on Windows NT, contact Sigma Design to acquire a Rainbow Parallel Port Superpro key.

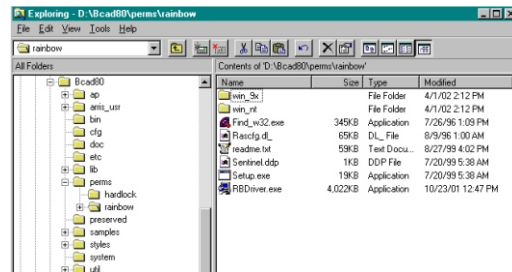
Note that the Rainbow Sentinel Driver must be installed first, **BEFORE** the USB key is installed on the computer.



Installing the Sentinel Driver

To install the Rainbow Sentinel Key Driver:

1. Open the Windows Explorer and navigate to the BCAD 8X program folder (the default location is C:\Program Files\BCAD 8X).
2. Locate the driver executable file RBDriver.exe located in the BCAD 83\perms\rainbow directory.
3. Double click the driver executable file. Follow the installation prompts. Allow the install process to restart the computer after the driver is installed.



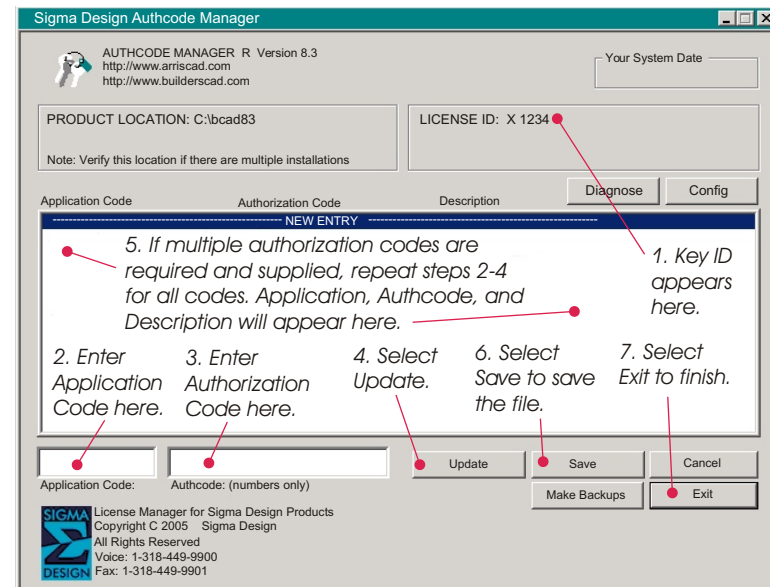
ONLY AFTER THE DRIVER IS INSTALLED, install the USB key to any USB port on your computer. It is not necessary to turn off the computer for this step. The first time the key is installed, Windows "Plug and Play" will recognize the key and pop up a message that it is activating the driver.



Updated April 14, 2005

Authorizing BuildersCAD

Start the **Sigma Authcode Manager** by selecting *Start -> Programs -> Bcad 83 -> Authcode Manager*. The Rainbow key ID number will appear in the License ID box. Verify that this number is present and matches the number for which your authorization codes were generated. Sigma Design provides a *Product Authorization sheet* showing the *Application Code* and *Authorization Code* for **BuildersCAD** to be filled in on the Authcode Manager menu.



Follow steps 2-7 as illustrated in the diagram above. Enter the *Application Code* (Step 2) and the *Authorization Code* (Step 3) in their respective boxes in the lower left portion of the **Authcode Manager** menu. Next select the *Update* button (Step 4). The Application and Authorization codes will appear in the large white space in the center of the menu. If multiple authorization codes are required, repeat steps 2-4 as necessary (Step 5) for each of the **BuildersCAD** Plug-in codes given.

When the application and authorization codes have been entered, select the *Save* button (Step 6) to save the authorization to the disk. The description(s) will now appear in the center of the menu. Select *Exit* (Step 7) to close the menu. **BuildersCAD** is now authorized and ready to go!

Authorizing BuildersCAD 8 Using a Rainbow USB Superpro Key

Potential Problem using a USB key on Windows 98:

If you plug the USB key in before installing the key driver, or if you have plugged other devices into the USB port, Windows 98 may have attempted to install a system driver for the USB port that will not work with the Sentinel USB key. If after executing RBDriver.exe, the Authcode Manager still does not recognize the USB key, you need to manually reinstall the Rainbow Sentinel Driver by following these steps:

1. Select the Windows Start->Settings->Control Panel
2. On the Control Panel, double click the System icon and select the Device Manager tab.
3. Scan down the list of devices until you find the USB controllers. They may be called the Universal Serial Bus controllers.
4. Look for an exclamation mark or question mark with the USB controllers.
5. If either an exclamation mark or question mark is found, select it with the right mouse button and select the option to reinstall the USB driver.