

SUPPLEMENT MANUAL FOR

DWGplace Application

Release 1.7

DWGplace Application 1.7

Contents

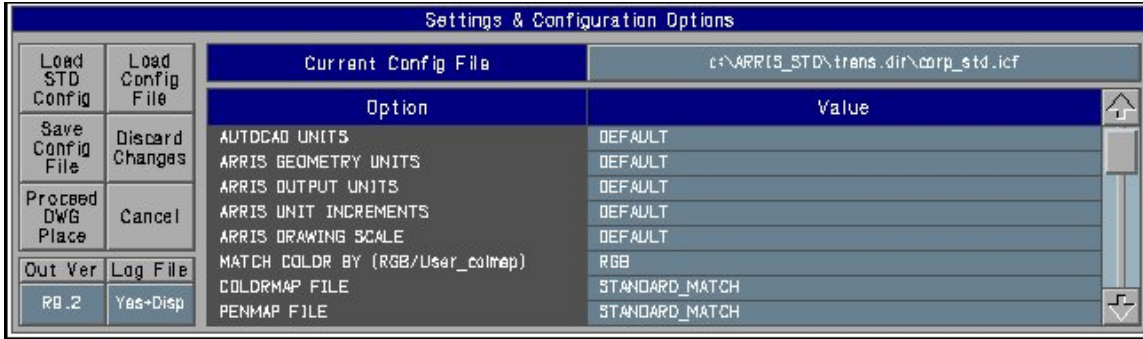
- ❖ Introduction
- ❖ Running the DWGplace R1.7 Application from within ARRIS/BuildersCAD
- ❖ No Download or Installation for the DWG Application
- ❖ Authorizing the DWGplace Application
- ❖ Limitation of the DWGplace application and Future Expansion

Introduction

The *DWGplace* program is a new ARRIS plug-in that enables the quick and easy translation and direct insertion of a small DWG drawing at a selected location, scale and rotation and layer into the current ARRIS or BuildersCAD session. The DWGplace Translator is a separate standalone Application, but it is embedded within the Expert Translator for ARRISCAD/BuildersCAD plug-in, as they share many common routines. Loading the Expert Translator – from within Graphics – will automatically bring the DWGplace application to be ready. This DWGplace Application manual is a chapter as an extension of the Expert Translator for ARRIS manual. This supplement of the manual describes the additional commands needed to run the DWGplace Application.

Running the *DWGplace* R 1.7 Application from within ARRIS/BCAD:

- 1) From Graphics, load the 'Expert Translator' as a Plug-In Module, as usual.
- 2) At the Prompt line, type the command: **et_dwgplace C/R**
- 3) You will be prompted to select:
 - a) DWG: to select a DWG file to place into the current working layer.
 - b) DXF: to select a DXF file.
 - c) Configure: to select a configuration file for the current translation; else the program will use the default configuration.
- 4) If you have selected Option 3a or 3b:
 - a) You will be prompted next by a 'FILE Selection pop-up Menu' to select a DWG or DXF file from the disk. The file selected should be a small file that does not exceed 40K (when translated as a RI it should not exceed the 31K maximum limit of the ARRIS RI).
 - b) After a moment (to translate the DWG), the program will prompt for the RI location (i.e., the DWG location). The cursor displays the DWG file at the current scale and rotation. Before selecting the insertion point you can change the Rotations and the Scales of the inserted DWG from the displayed RI status Menu.
 - c) The program will repeat step (3) above, to insert other copies of the DWG in the current layer until a C/R is entered.
 - d) You can freeze the placed DWG (as an RI) after you inserted it. (This is recommended only if you have inserted 1 RI of the same DWG.)
- 5) If you have selected Option 3c:
 - a) This will start a configuration setting up which is very similar to the current Translator DWG to APRIS configuration setting. It uses the same .icf files and it defaults to either the file corp_std.icf if it is existing in a visible directory, or to the built-in system 'Standard Configuration' stored within the program. Selecting the "Configure" option displays the following Pop-up:



DWGplace - Settings and configuration Options

From this pop-up you can select, modify and save the configuration file. Hitting “Proceed DWG Place” will continue the `et_dwgplace` command at option 3 above. Moreover, from the same popup you can also set the following:

- a) The “ARRIS out-put Version” of the RILIB file produced, and in which the DWG translated with all its Blocks are saved. This RILIB has the same name as the DWG selected and is stored inside the current database directory.
- b) The “log file mode”: The Log-Mode has now three options:
 - i) “Yes” will create a log file on the disk, but will not display it after finishing the Translation.
 - ii) “Yes+Disp” will create a log file on the disk, and will directly display it to the end user after finishing the Translation and before prompting to place the DWG’s RI in the current dc in the working layer.
 - iii) “No” will not create a log file.

No Download or Installation for the *DWGplace* Application:

The DWGplace application is embedded in the “Expert Translator for ARRIS/BCAD” R7.7. Downloading and installing the Translator will automatically install the DWGplace application R1.7.

Authorization Instructions:

- 1) The DWGplace application R1.7 needs an authcodes to run it. Contact your ARRIS Dealer or buy it from our website www.Expert-Infocad.com/inedx2.html under the Expert Translator; then please email your ARRIS key number to receive the authcodes for the DWG Application.

Limitation of the *DWGplace* application and Future Expansion

Inserting a DWG with its entire layers into the current Layer will tremendously increase the display list of the current layer. If the display list reaches the limit of 32K, this may cause ARRIS to crash and the last edit to this db will be lost. So this version of the DWGplace may be optionally limited to:

- 1) Use only small to medium DWG files.
- 2) Insert multi DWG, each on a separate Layer.
- 3) Avoid as much as possible inserting more than one DWG (as RI or Insert) on the same layer.

I see an array of possible enhancements to this program. Here are some:

- 1) Enhancement to Translate the DWG as a multiplicity of layers files which can be appended to the drawing on different layers and thus avoiding to a great extent the display-list 32K limitation.
- 2) Making the program more users friendly, more integrated with ARRIS/BCAD as well as with the AutoCAD DWG files. Or, in simple words, making it available to the end user to smoothly add to the current ARRISCAD and BuildersCAD drawing the unlimited resources available as DWG drawings we found everywhere.